

PRODUCT MANUAL 2023

DZOFILM

GNOSIS
MACRO

CATTA
ACE

CATTA
ZOOM

VESPID
PRIME

VESPID
RETRO

VESPID
CYBER

PICTOR
ZOOM

LING
LUNG



CREATIVE & DELIGHTED

The spirit of a lens depends on those who manipulate them. Different creators in different fields would generate new value and experience. Young but vigorous DJ, geek of extreme sports, courageous adventurers, cartoonist, five-star chef, aircraft commander etc ...

EFFICIENT

At this moment, it is because the scene through the lens just fits well with our ideal. There is no need to wait or hesitate. Adhering to the spirit of the brand, DZOFILM dedicates to eliminating complications and superfluties in the products and services, leading you to a swift and fast workflow.

PROVEN

Fast fashion would be gone but classics remain permanently. Cine lens, as an object nurtured and cultivated by optical technology, should try to be the best of all possibilities in design. Balancing the harmony between aesthetics and utility, we keep the products compact and versatile. DZOFILM tries to witness and benefit from the test of time freely and easily, no matter at the core or the external.

VITALITY

The concept of DZOFILM is to explore more possibilities and incorporate it into daily filming and thinking. Whether the combination among cine equipments, the interaction between time and space, or the relationship between cinematographer and objects, above of all , could be the next exploration of DZOFILM.

01

GNOSIS MACRO



07

CATTA ACE



13

CATTA ZOOM



23

VESPID PRIME



31

VESPID RETRO



35

VESPID CYBER



41

PICTOR ZOOM



47

LINGLUNG ZOOM



50

MARLIN EXPANDER



54

OCTOPUS ADAPTER



59

CATTA COIN



64

KOOP FILTER



GNOSIS

VISTA VISION

FOCUSING ON DETAILS REFRAMING MICRO VISION

The 32/65/90mm lens allows you to get an incredible amount of details and discover the astonishing image of the microcosm at the minimum focusing distance of 17-26cm with a 1:1/1.33:1/1.5:1 magnification ratio respectively.





FOR PROFESSIONAL FILMMAKING AND TACTFUL COLLABORATION

The industry standard front diameter of 114mm is compatible with matte boxes and other accessories, eliminating the need for repeated adjustments when changing lenses and greatly enhancing shooting efficiency.



CINEMATIC IMAGING IN GREAT DETAILS

From the MFD to INF, Gnosis provides excellent image quality with extreme sharpness from the center of frame right out to the edges.

The color rendition is uniformly and naturally clean from in-focus to out-of-focus, presenting a stunning image rich in gradation.



RELIABLE, PRECISE MECHANICS FOR SMOOTH CREATION

Precisely control and shift the focus with a 300 degree rotation to get a stable and comfortable performance and perfect your work.

[PARAMETER]

FOCAL LENGTH	32mm	65mm	90mm
COLOUR	BLACK		
MOUNT	PL / EF / LPL		
T-STOP	T2.8-T22		
IMAGE CIRCLE	φ 46.5mm (VV/FF)		
OPTICAL CONSTRUCTION	11 Elements in 9 Groups	11 Elements in 8 Groups	11 Elements in 9 Groups
FLANGE DISTANCE	52mm (PL) / 44mm (EF) / 44mm (LPL)		
CLOSE FOCUS [FROM SENSOR PLANE]	0.167m / 6.6in	0.237m / 9.36in	0.258m / 10.2in
MAGNIFICATION RATIO	1.0X	1.33X	1.5X
IRIS CONTROL	Manual (rotation angle 55°)	Manual (rotation angle 67°)	Manual (rotation angle 68°)
FOCUS CONTROL	Manual (rotation angle 300°)		
FRONT DIA.	φ 114mm		
LENGTH	112mm		
IRIS BLADE	16		
FILTER SIZE	M105		
GEAR PITCH	0.8 Mod		
MATERIAL	Aluminium alloy		
WEIGHT	≈1460g	≈1447.5g	≈1280.5g

18-35 | 35-80 | 70-135MM T2.9

CATTA ACE

STRONGER THAN EVER

VV FORMAT
46.5mm Image Circle

LIGHT AS ALWAYS
Stronger than Ever





CLEAR AS YOU SEE

Even in Wide Open



STUNNING BREATHING CONTROL

Create Immersive Scenes



[PARAMETER]

FOCAL LENGTH	18-35 mm	35-80 mm	70-135 mm
COLOUR	Black		
MOUNT	PL / EF / LPL		
T-STOP	T2.9-T22		
IMAGE CIRCLE	φ43.5mm	φ46.5mm (VV/FF)	
OPTICAL CONSTRUCTION	20 Elements in 14 Groups	20 Elements in 15 Groups	17 Elements in 11 Groups
FLANGE DISTANCE	PL=52mm, EF/LPL=44mm		
CLOSE FOCUS (FROM SENSOR PLANE)	0.51m/1ft8in	0.74m/2ft5in	0.76m/2ft6in
ZOOM RATIO	1.9X	2.3X	1.9X
IRIS CONTROL	Manual (rotation angle 77°)	Manual (rotation angle 75°)	Manual (rotation angle 80°)
FOCUS CONTROL	Manual (rotation angle 270°)		
ZOOM CONTROL	Manual (rotation angle 100°)		
FRONT DIA.	φ80mm/3.15"		
LENGTH	179.5mm/7.07" (PL), 187.5mm/7.38" (EF/LPL)		
IRIS BLADE	16		
FILTER SIZE	M77		
GEAR PITCH	0.8 Mod		
MATERIAL	Aluminum Alloy		
WEIGHT	≈1850g	≈1635g	≈1710g

35-80 | 70-135MM T2.9

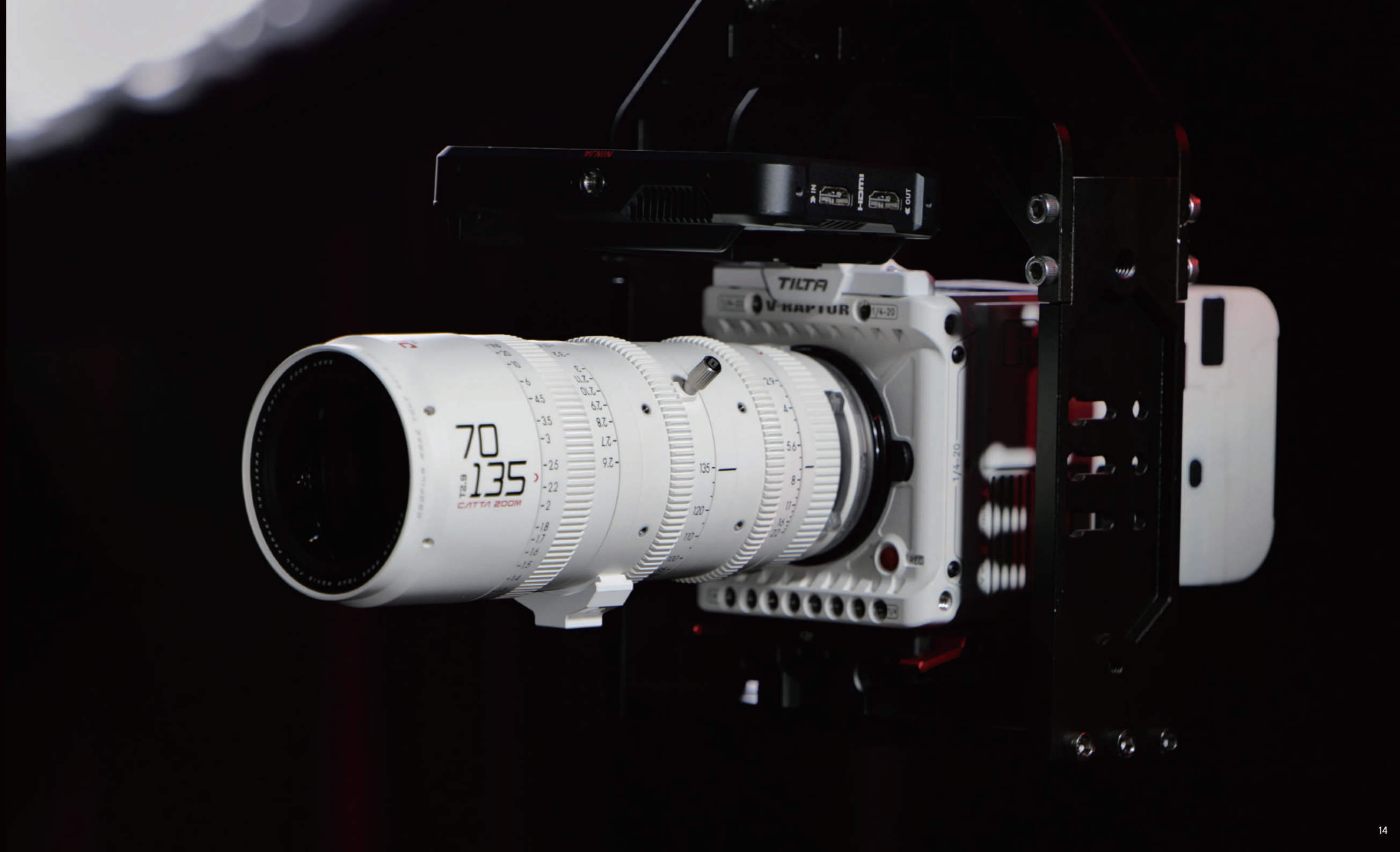
CATTA ZOOM

FULL FRAME

AUTHENTIC COLOR REPRODUCTION

Embraced the design philosophy of natural, original and real, Catta Zoom lenses reproduce the real world on that small yet comprehensive sensor.

The golden focal lengths of 35-80mm/70-135mm enable cinematographers to create cinematic images without sacrificing time in lens replacing.





FLATTERING SKIN TONE

Comfortable and vivid
reproduction of natural skin tone.
All comes in just right.



BETTER BREATHING CONTROL THAN EVER

Same as it ever was minimal breathing
in DZOFILM cine lenses, this time you
can find a better performance in Catta.

Invisible breathing whether zoom in
or out along the journey without any
additional concerns.



AESTHETIC BOKEH WITH FLUID TRANSITION

Rounded Bokeh emerged from 16 bladed iris, it characterizes exquisite texture and gentle sharpness to realize excellent image quality.



UNIFORM AND CONSISTENT PERFORMANCE

These two lenses are uniform in both mechanics and optics. A perfect combo in shooting videos from wide to long focus. Zero distortion signify the multidimensional sense and can be flattering to the subject.



PARFOCAL DESIGN

Retain focus while zooming.
The parfocal optical design allows for zoom racking without loss of focus. It has dramatically reduced breathing and image shift.

PLUG-IN FILTER UNLOCK THE SECRET

Not only the lens loaded with 77mm detachable front filter to stimulate the unique moment but also the rear plug-in filter adds amusement to the shooting experience. Allowing users to change ND /UV / Streak / Mist filter freely.





RELIABLE DZOFILM-BUILT

Lighter, stronger.
Catta zoom lenses, provide all you desire.
Always believe in DZOFILM quality.

[PARAMETER]

FOCAL LENGTH	35-80mm	70-135mm
COLOUR	BLACK / WHITE	
MOUNT	E/RF/L/X/Z	
T- STOP	T2.9-T22	
IMAGE CIRCLE	φ 43.5mm(FULL FRAME)	
OPTICAL CONSTRUCTION	20 Elements in 15 Groups	17 Elements in 11 Groups
FLANGE DISTANCE	E=18mm, L/RF=20mm, X=17.7mm, Z=17mm	
CLOSE FOCUS [FROM SENSOR PLANE]	0.74m/2ft5in	0.76m/2ft6in
ZOOM RATIO	2.3x	1.9x
IRIS CONTROL	Manual (rotation angle 75°)	Manual (rotation angle 80°)
FOCUS CONTROL	Manual (rotation angle 270°)	
ZOOM CONTROL	Manual (rotation angle 100°)	
FRONT DIA.	φ 80mm/3.15"	
LENGTH	212.4mm/8.36" (RF/L); 214.4mm/8.44"(E); 214.7mm/8.45"(X); 215.4mm/8.48"(Z)	
IRIS BLADE	16	
FILTER SIZE	M77	
GEAR PITCH	0.8 Mod	
MATERIAL	PC+GF	
WEIGHT	≈1532g	≈1597g

16MM T2.8 / 21 / 25 / 35 / 40 / 50 / 75
100 / 125MM T2.1 & MACRO 90MM T2.8

VESPID PRIME

VISTA VISION

CINEMATIC CAPTURING BEYOND FULL FRAME (46.5MM)

Weigh only 732g-940g
Compact and Portable, Convenient
for documentary shooting.

Like a Vespida, nimble and agile,
easy to satisfy different shooting
conditions.



VIGOROUS

Swift and fast, easy to satisfy different shooting conditions, no matter in a single unit or a whole group.



FAITHFUL YOUR RELIABLE FILMING PARTNER

Negligible breathing effect, creating an immersive scene. Neutral color, fine and soft skin rendering, represent the actual image. A perfect companion between A-roll and B-roll.



APO DESIGN
GENTLE SHARPNESS AND
VIVID CLARITY

Appropriate sharpness generates cinematic feeling while expressing organic look and fine details. In accordance with standard of APO, Vespida Prime optimizes chromatic aberration one by one.

PLEASING
ROUND BOKEH

16-blade diaphragm design, achieves natural and soft bokeh. Organic and emotional images composed by esthetic transition during focus falling off.



BALANCED
ALL IS JUST TO THE POINT

Balance between modern and slightly vintage. Consistent performance solid construction keeps Vespida Prime functioning even under diverse environment.

[PARAMETER]

FOCAL LENGTH	16 mm	21 mm	25 mm	35 mm	40 mm
COLOUR	Black				
MOUNT	PL / EF				
T-STOP	T2.8-T22	T2.1-T22			
IMAGE CIRCLE	φ46.5(VV/FF)				
OPTICAL CONSTRUCTION	14 Elements in 10 Groups	13 Elements in 9 Groups	12 Elements in 11 Groups	11 Elements in 9 Groups	10 Elements in 9 Groups
FLANGE DISTANCE	52mm(PL)/44mm(EF)				
CLOSE FOCUS DIS. (FROM SENSOR PLANE) (METRIC/IMPERIAL)	0.25m/10in	0.28m/11in		0.3m/1ft	
MAGNIFICATION RATIO	/				
IRIS CONTROL	Manual (rotation angle 50°)	Manual (rotation angle 68°)		Manual (rotation angle 63°)	Manual (rotation angle 68°)
FOCUS CONTROL	Manual (rotation angle 270°)				
FRONT DIA. (METRIC/IMPERIAL)	φ80mm/3.15"				
LENGTH (METRIC/IMPERIAL)	87mm/3.43"		100mm/3.94"	87mm/3.43"	
IRIS BLADE	16				
FILTER SIZE	/		M77		
GEAR PITCH	0.8 Mod				
MATERIAL	Housing: Aluminum Alloy				
WEIGHT	≈930g	≈935g	≈940g	≈834g	≈943g

[PARAMETER]

FOCAL LENGTH	50 mm	75 mm	90 mm	100 mm	125 mm
COLOUR	Black				
MOUNT	PL / EF				
T-STOP	T2.1-T22		T2.8-T22	T2.1-T22	
IMAGE CIRCLE	φ46.5(VV/FF)				
OPTICAL CONSTRUCTION	9 Elements in 7 Groups		11 Elements in 9 Groups	9 Elements in 7 Groups	10 Elements in 8 Groups
FLANGE DISTANCE	52mm(PL)/44mm(EF)				
CLOSE FOCUS DIS. (FROM SENSOR PLANE) (METRIC/IMPERIAL)	0.46m/1.6ft6in	0.6m/2ft	0.258m/10.2in	0.7m/2ft4in	0.79m/2ft7in
MAGNIFICATION RATIO	/		1.5X	/	
IRIS CONTROL	Manual (rotation angle 58°)	Manual (rotation angle 68°)		Manual (rotation angle 83°)	Manual (rotation angle 84°)
FOCUS CONTROL	Manual (rotation angle 270°)		Manual (rotation angle 300°)	Manual (rotation angle 270°)	
FRONT DIA. (METRIC/IMPERIAL)	φ80mm/3.15"				
LENGTH (METRIC/IMPERIAL)	87mm/3.43"		112mm/4.41"	100mm/3.94"	
IRIS BLADE	16				
FILTER SIZE	M77				
GEAR PITCH	0.8 Mod				
MATERIAL	Housing: Aluminum Alloy				
WEIGHT	≈732g	≈865g	≈800g	≈890g	≈924g

VESPID RETRO

VISTA VISION

16MM T2.8 / 25 / 35 / 50
75 / 100 / 125MM T2.1



GOLDEN COATING RETRO AESTHETICS

Special coating techniques meet more possibilities for evocative and stylistic filming. Unconventional anodized aluminum alloy in silver provides a classic and stylish appearance.

GOLDEN COATING, RETRO AESTHETICS

Special coating techniques meet more possibilities for evocative and stylistic filming. Unconventional anodized aluminum alloy in silver provides a classic and stylish appearance.





AMBER HUE, CRAFT ETERNITY

The distinctive amber halation can be creatively controlled for authorial expression. The controllable warm tangerine glow evokes sun-soaked memories, rich in sensual and poetic naturalistic colors, suitable for Arthouse film and Atmospheric film that represents consciousness and dreams.

[PARAMETER]

FOCAL LENGTH	16 mm	25 mm	35 mm	50 mm	75 mm	100 mm	125 mm
COLOUR	Silvery						
MOUNT	PL / EF						
T-STOP	T2.8-T22			T2.1-T22			
IMAGE CIRCLE	φ46.5(VV/FF)						
OPTICAL CONSTRUCTION	14 Elements in 10 Groups	12 Elements in 11 Groups	11 Elements in 9 Groups	9 Elements in 7 Groups			10 Elements in 8 Groups
FLANGE DISTANCE	52mm(PL)/44mm(EF)						
CLOSE FOCUS DIS. (FROM SENSOR PLANE)	0.25m/10in	0.3m/1ft		0.46m/1.6ft6in	0.6m/2ft	0.7m/2ft4in	0.79m/2ft7in
MAGNIFICATION RATIO	/						
IRIS CONTROL	Manual (rotation angle 50°)	Manual (rotation angle 68°)	Manual (rotation angle 63°)	Manual (rotation angle 58°)	Manual (rotation angle 68°)	Manual (rotation angle 83°)	Manual (rotation angle 84°)
FOCUS CONTROL	Manual (rotation angle 270°)						
FRONT DIA.				φ80mm/3.15"			
LENGTH	87mm/3.43"	100mm/3.94"		87mm/3.43"			100mm/3.94"
IRIS BLADE				16			
FILTER SIZE	/						
GEAR PITCH	0.8 Mod						
MATERIAL	Aluminum Alloy						
WEIGHT	≈930g	≈940g	≈834g	≈732g	≈865g	≈890g	≈924g

VESPID CYBER

VV / FF / T2.1-22

REAL-TIME TRANSMISSION

Focusing and aperture data are acquired with unique DZOFILM data interface function.





QUICK SET-UP

Connects DJI Ronin RS3 Pro
without calibration.

THREE GOLDEN FOCAL LENGTHS COUNTLESS POSSIBILITIES IN THE FUTURE

35/50/75mm
Stay tuned to see more options
in the future.



**OPEN SYSTEM,
EXPAND YOUR POSSIBILITIES**

More application scenarios will be supported in the future.

[PARAMETER]

FOCAL LENGTH	35 mm	50 mm	75 mm
COLOUR	Black		
MOUNT	PL / EF		
T-STOP	T2.1-T22		
IMAGE CIRCLE	φ46.5(VV/FF)		
OPTICAL CONSTRUCTION	11 Elements in 9 Groups	9 Elements in 7 Groups	
FLANGE DISTANCE	52mm(PL)/44mm(EF)		
CLOSE FOCUS (FROM SENSOR PLANE)	0.3m/1ft	0.46m/1.6ft	0.6m/2ft
IRIS CONTROL	Manual (rotation angle 63°)	Manual (rotation angle 58°)	Manual (rotation angle 68°)
FOCUS CONTROL	Manual (rotation angle 270°)		
FRONT DIA.	φ95mm		
LENGTH	97mm		
IRIS BLADE	16		
FILTER SIZE	M86		
GEAR PITCH	0.8 Mod		
MATERIAL	Aluminum Alloy		
INTERFACE TYPE	LEMO(4 PIN) - TYPE C, IP50		
WEIGHT	≈1150g	≈1000g	≈1150g

12-25 | 14-30 | 20-55 | 50-125 MM T2.8-22

PICTOR ZOOM

SUPER S35

INSPIRE YOUR IMAGINATION

Pictor Zoom 20-55mm T2.8 / 50-125mm T2.8 covers the S35 8K resolution with a constant T2.8 aperture in full focal lengths, bringing you a brilliant image. Parfocal design, negligible breathing, compact and tight

shape with precise control (270° focus rotation angle, standard M0.8 Mod gear pitch), include diversity mount adapter system, together activate the needs of shooting choice.





MINIMAL BREATHING

Thanks to the floating structure, the breathing of Pictor Zoom lenses are negligible during focusing and creating an immersive scene.

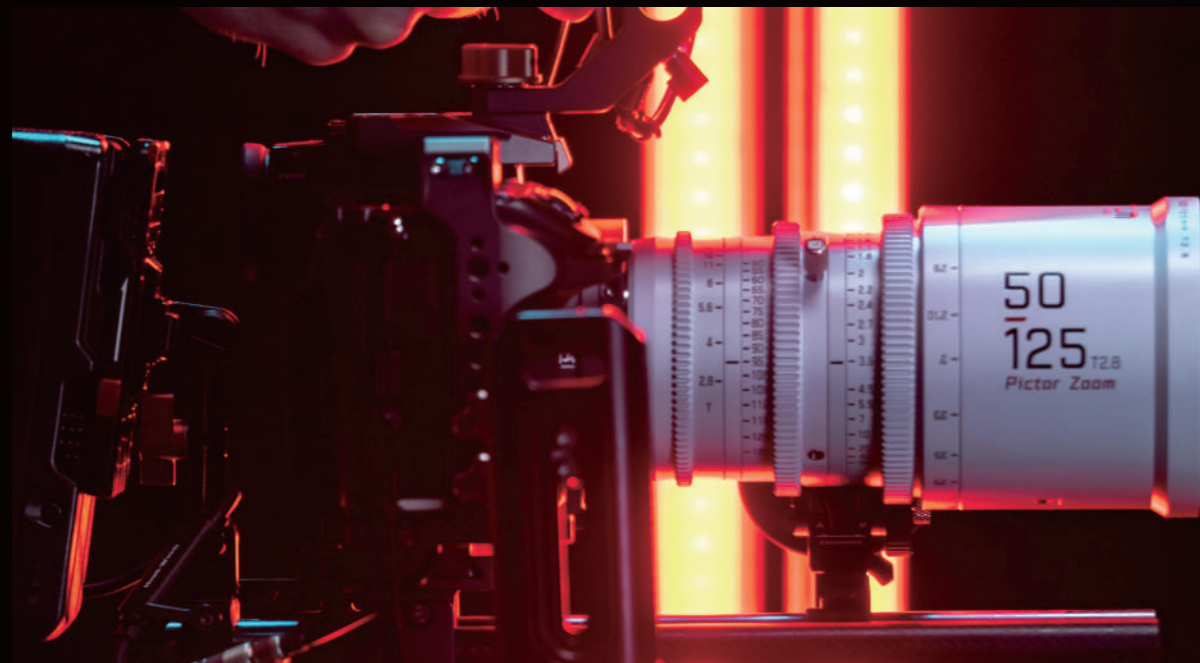


PARFOCAL DESIGN

Center image stays sharp during zooming in or out. No matter from close-up to wide shot, or rapidly zoom out to long shot, under parfocal design, focus keeps still all the way along facilitate you to release infinite idea freely.

PROFESSIONAL CINE LENSES WITH CONCRETE BUILD

DZOFILM is devoted to exploring the aesthetic of film and design of optics. Both mechanics and optics are designed to be compact and versatile, allowing users to enjoy the smooth and precise operation and every shooting moment with Pictor Zoom.



[PARAMETER]

FOCAL LENGTH	14-30 mm	20-55 mm	50-125 mm
COLOUR	Black / White		
MOUNT	PL / EF		
T-STOP	T2.8-T22		
IMAGE CIRCLE	φ31.5mm(S35)		
OPTICAL CONSTRUCTION	21 Elements in 17 Groups	18 Elements in 15 Groups	18 Elements in 13 Groups
FLANGE DISTANCE	52mm(PL) / 44mm(EF)		
CLOSE FOCUS (FROM SENSOR PLANE)		0.6m/2ft	0.8m/2ft8in
ZOOM RATIO	2.14X	2.75X	2.5X
IRIS CONTROL	61°	65°	72°
FOCUS CONTROL	270°		
ZOOM CONTROL	100°		
FRONT DIA.	φ95mm/3.74"		
LENGTH	173mm(PL)6.81"/ 181mm(EF)7.13"	164mm(PL)6.46"/ 171.9mm(EF)6.77"	175mm(PL)6.89"/ 182.9mm(EF)7.20"
IRIS BLADE	16		
FILTER SIZE	M86*0.75		
GEAR PITCH	0.8 Mod		
MATERIAL	Aluminum Alloy		
WEIGHT	≈1880g	≈1520g	≈1700g



LINGLUNG

PROFESSIONAL M4/3 ZOOM

10-24MM T2.9 / 20-70MM T2.9

As the first model of product in DZOFILM, Linglung series are the cine zoom lenses which are designed for M4/3, covered both 10-24mm and 20-70mm focal length. Professional, compact and tight, the whole metal structure combine parfocal design with negligible breathing, which boosting your shooting experience.

PROFESSIONAL

Precise Film-grade Mechanical Control
Forming "Muscle" for Professional Operation.



PARFOCAL DESIGN

No matter from close-up to wide shot,
Or rapidly zoom out to long shot, Under parfocal design, focus keeps unchanged all the way along.



MINIMAL BREATHING

Near-zero breathing, which allowing for decent expression through images. DZOFILM Linglung provides users with a high standard and a better experience of lens.

ELABORATE OPTICAL DESIGN

Smooth and creamy bokeh with clear layer and natural transition 12-pieces blade design generates elegant and round image. Neutral and natural style objectively reflects the true color of lens.

[PARAMETER]

FOCAL LENGTH	10-24 mm	20-70 mm
COLOUR	Black	
MOUNT	M43	
T-STOP	T2.9-T22	
IMAGE CIRCLE	φ21.6mm(M43)	
OPTICAL CONSTRUCTION	17 Elements in 14 Groups	16 Elements in 12 Groups
FLANGE DISTANCE	19.2mm±0.3mm	
CLOSE FOCUS (FROM SENSOR PLANE)	0.61m/2ft	0.79m/2ft7in
ZOOM RATIO	2.4X	3.5X
IRIS CONTROL	55°	72°
FOCUS CONTROL	270°	
ZOOM CONTROL	100°	
FRONT DIA.	φ80mm/3.15"	
LENGTH	148.9mm/5.86"	153.3mm/6.04"
IRIS BLADE	12	
FILTER SIZE	/	77mm
GEAR PITCH	0.8 Mod	
MATERIAL	Aluminum Alloy	
WEIGHT	≈1500g	

MARLIN

1.6X EXPANDER



INCREASES THE FOCAL LENGTH AND MAGNIFIES THE IMAGE CIRCLE BY 1.6X

Converts Super 35 Pictor Zoom lenses to cover Full Frame or Vista Vision. Multiplies focal length by 1.6x with only 1.5 stops light loss.

PL-E/RF/L/LPL/PL



RETAINS OUTSTANDING OPTICAL PERFORMANCE AND OPERABILITY

Maintains superb image quality without decreasing resolution. Marlin enables the use of S35 lenses to compatible with FF and Vista Vision cameras, which facilitates the use of lenses for more possibilities.



A SPECIAL RING ACHIEVES QUICK FLANGE BACK ADJUSTMENT

Minor flange back adjustment through this ring, no need to use shims (Excl. PL-PL, PL-LPL versions). In order to achieve the best image performance, the FBD can be quickly adjusted without removing the lens and camera.

[PARAMETER]

LENS MOUNT	PL				
CAMERA LENS MOUNT	PL	LPL	E	RF	L
MAGNIFICATION	1.6X				
OPTICAL CONSTRUCTION	5 Elements in 2 Groups				
MATERIAL	Aluminum Alloy				
WEIGHT	≈402.6g	≈450.9g	≈676.6g	≈637.8g	≈636.8g

[COMMON T-STOP CONVERSION]

T-STOP BEFORE USING EXPANDER	1.3	1.8	2	2.1	2.8	2.9
T-STOP AFTER USING EXPANDER	2.2	3.0	3.4	3.5	4.7	4.9
FUMULA	T-stop = Lens wide open T-stop × 2 ^{1/2x} light decreased stop					

OCTOPUS ADAPTER



PL-RF / L / E / DX / X
EF-RF / L / E

Octopus, a kind of smart creature that catches subjects tightly through their tentacles. Inspired by this, the DZOFILM adapter holds the lens to the camera body tightly as an Octopus does and keeps it secure during use.

PRECISE FIT AND SOLID CONNECTION

Active-locking system eliminates play, gap or wiggling when mounted on adapter, no adjustments required.



SOLID, COMPACT AND RELIABLE

Aluminum-alloy components for weight reduction. Stainless steel construction prevents any physical changes due to temperature fluctuations.



STRENGTHENED SUPPORT

1/4 Screw Support Design, change the center of gravity from lens mount to adapters. Pure mechanics guarantees durability and stability without performance degradation.

[PARAMETER]

COLOUR	Black							
LENS MOUNT	PL					EF		
CAMERA LENS MOUNT	RF	E	X	L	DX	RF	E	L
MATERIAL	Aluminum Alloy							
WEIGHT	≈352g	≈390g	≈403g	≈354g	≈512g	≈261g	≈299g	≈259g



CATTA COIN PLUG-IN FILTER

NO SET
BLACK MIST SET
ARTISTIC SET

HIGH-QUALITY DZOFILM DOUBLE-SIDED NANO COATING

DZOFILM double-sided nano coating reduces reflection and flaring. Coating material: PVD Anti-Fingerprint tablet. The active ingredient is evaporated

to the glass surface to form a hydrophobic and oleophobic nano-coating which can effectively prevent glass surface from fingerprints and retain cleanliness.





COMPACT & PORTABLE

Rear plug-in filters not only allow users to change ND / star / streak / black mist filter freely, but also add fun in making films.



A RELIABLE COMPANION WITH CATTI ZOOM

Original rear filter design, maintains original clean images without flaring or ghosting.

KOOP FILTER

PLUG-IN FILTER

[PARAMETER]

NAME	ND Set	Black Mist Set	Artistic Set
SPECIFICATION	ND 0.6 ND 0.9 ND 1.2	Black Mist 1/4 Black Mist 1/8	Blue Streak Yellow Streak Rainbow Streak Rainbow Starlight

ENGAGING & VARIABLE

STANDARD SET:

ND 4 / ND 8 / ND 16 / L365 UV

ARTISTIC SET:

Black Mist 1/4 / Streak Filter (Blue) /
DIY Bokeh Filter

Detachable & Magnetic Rear Filters.

No change to weight center and image
quality. Original filter design brings
protection to lens rear and also creates
stylized image.

FOR VESPID PRIME &
CATTI ACE [PL MOUNT] LENSES



L365 UV

ND4



ND8

ND16

L365 UV

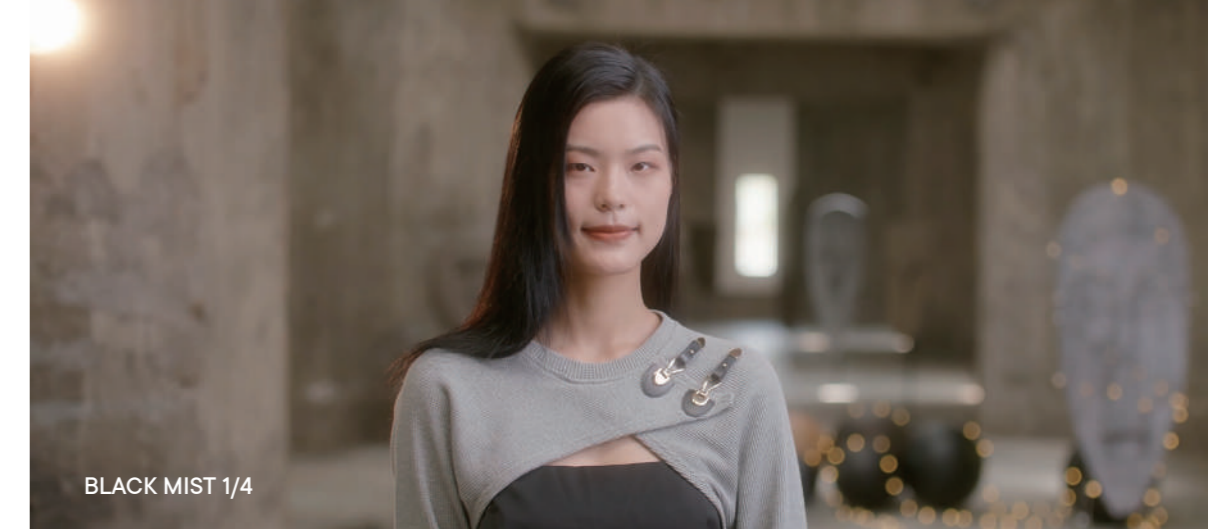
Protective barrier for rear element, effectively reduces dust, moisture and scratches. Absorbs UV light and reduces bluish cast of daylight. Diminish the damage from sunlight to sensors. Nano multi-coating prevents loss of light.

ND4 | ND8 | ND16

Control exposure and depth-of-field under various lighting conditions with three degree of ND(4/8/16). Meticulous machining contributes the consistency on filters. Enable even exposure in unbalanced lighting conditions.

BLACK MIST 1/4

Reserve more shadow details while softening the light.



BLACK MIST 1/4

STREAK FILTER (BLUE)

Flexible and controllable, just for your creative filming. Long blue anamorphic streak effect simulated in strong light. Boost the technical sense on the image.



STREAK FILTER (BLUE)

DIY BOKEH FILTER

Unlock the game of Vespider Prime and Catta Ace Zoom (PL mount), and free your creativity. DIY Bokeh, adding flares, lower the sharpness... Magnetic filter frame+ Bokeh Filter, the secret to unique bokeh. Start with D logo, Star, Lighting, Heart and Question Mark filters in the package.



DIY BOKEH FILTER

[PARAMETER]

NAME	Standard Set	Artistic Set
SPECIFICATION	ND 4 ND 8 ND 16 L365UV	Blue Streak Black Mist 1/4 DIY Bokeh Filter

2023
DESIGN

PRODUCT
MANUAL

DZOFILM

CONTACT US

Email: info@dzofilm.com

ADD.: 2A2106, COFCO Xiangyun, Ailian Street, Longgang District, Shenzhen, China



www.dzofilm.com