



# Hollyland Solidcom C1 Pro (No Hub)

User Manual

V4.0

Single-Ear Wireless Stereo Headset / Double-Ear Wireless Stereo Headset

# Introduction

Thank you for purchasing Hollyland Solidcom C1 Pro full-duplex wireless noise cancelling intercom system.

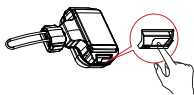
The Solidcom C1 Pro, adopting the advanced DECT technology, is Hollyland's first wireless self-contained intercom system with Environmental Noise Cancellation (ENC). The system operates in the 1.9GHz band, providing a reliable LOS range of up to 1,100ft (350m).

This User Manual will help you through the installation and use of the equipment.

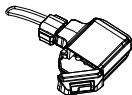
# Operation Guide

## ① Install the battery.

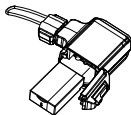
### • Single-Ear Wireless Stereo Headset



Step 1: Slide the battery compartment cover lock.

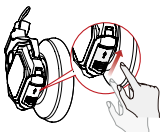


Step 2: Open the cover.

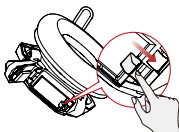


Step 3: Place the battery into the compartment and close the cover.

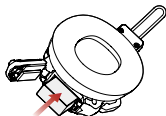
### • Double-Ear Wireless Stereo Headset



Step 1: Slide the battery compartment cover lock.

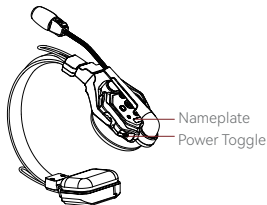


Step 2: Open the cover.



Step 3: Place the battery into the compartment and close the cover.

## ② Turn on the master headset and remote headsets.



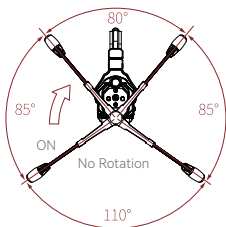
Master Headset Startup

1. Ensure that all the headsets are turned ON.
2. The indicator light stops flashing and stays ON when the master headset is successfully connected with the remote headsets.
3. Red nameplate: Master headset  
Blue nameplate: Remote headset

- Single-Ear Wireless Stereo Headset / Double-Ear Wireless Stereo Headset same operating scheme.

## Operation Guide

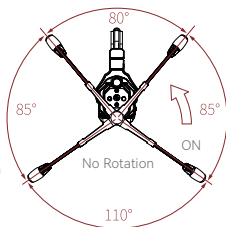
### ③ Turn on the microphone.



Rotate the microphone boom upwards clockwise.



Microphone Boom Rotation



Rotate the microphone boom upwards counterclockwise.

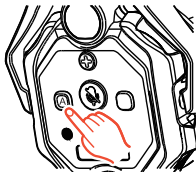
### ④ The Solidcom C1 Pro system is now ready for use.

#### Pairing

The master headset is paired with the remote headsets at the factory. They are ready for use right out of box. Manual pairing is only required when a new headset is added to the system. During the pairing process, all the headsets must be turned ON and connected.

#### Pairing steps:

1. Press and hold the A button on both the master headset and remote headsets for 5 seconds. Pairing is completed when the indicator light on each microphone boom stops flashing and stays ON.
2. One master headset can be paired with up to 7 remote headsets.



## Parameters

|                       |  |
|-----------------------|--|
| Transmission Range    | 1,100ft (350m) LOS   |
| Frequency Band        | 1.9 GHz (DECT) (varies by country and region)  |
| Modulation Mode       | GFSK   |
| TX Power              | $\leq 21\text{dBm}$ (125.9 mW)   |
| RX Sensitivity        | $< -90\text{dBm}$  |
| Battery Capacity      | 700mAh (2.66Wh)  |
| Operation Time        | Remote headset: $> 10$ hours (when ENC is turned ON)<br>Master headset: $> 5$ hours (when ENC is turned ON and the master headset is connected with 5 remote headsets)<br>Master headset: $> 4$ hours (when ENC is turned ON and the master headset is connected with 7 remote headsets) |
| Charging Time         | About 2.5 hours  |
| Frequency Response    | ENC OFF: 150Hz–7kHz (fluctuation range: $\pm 6\text{dB}$ )<br>ENC ON: 150Hz–7kHz (fluctuation range: $\pm 10\text{dB}$ )   |
| Signal-to-Noise Ratio | $71\pm 2\text{dB}@94\text{dBSPL}$ , 1kHz   |
| Distortion            | $< 1\%@94\text{dBSPL}$ , 150Hz–7kHz  |
| Microphone Type       | Electret   |
| Input SPL             | $> 115\text{dBSPL}$  |
| Output SPL            | $94\pm 3\text{dBSPL}$ (@94dBSPL, 1kHz)   |
| ENC                   | $20\text{dB}\pm 2$ with two microphones<br>(relative to environmental noise in all directions)   |
| Net Weight            | Single-Ear Wireless Stereo Headset:<br>About 170g (6oz) with batteries included<br>Double-Ear Wireless Stereo Headset:<br>About 250g (9oz) with batteries included   |
| Temperature Range     | $0^{\circ}\text{C}$ to $45^{\circ}\text{C}$ (working condition)<br>$-10^{\circ}\text{C}$ to $60^{\circ}\text{C}$ (storage condition)   |

Note: The frequency band and TX power vary by country and region.

## Safety Precautions

Do not place the product near or inside heating devices (including but not limited to microwave ovens, induction cookers, electric ovens, electric heaters, pressure cookers, water heaters, and gas stoves) to prevent the battery from overheating and exploding. Do not use non-original charging cases, cables, and batteries with the product. The use of non-original spare parts may cause electric shock, fire, explosion, or other dangers.

# Support

If you encounter any problems in using the product or need any help, please contact Hollyland Support Team via the following ways:

 Hollyland User Group

 HollylandTech

 HollylandTech

 HollylandTech

 support@hollyland.com

 www.hollyland.com

For more detailed operation instructions, please scan the following QR code:



## Statement

All copyrights belong to Shenzhen Hollyland Technology Co., Ltd.

## Trademark Statement

Without the written approval of Shenzhen Hollyland Technology Co., Ltd., no organization or individual may copy or reproduce part or all of any written or illustrative content and disseminate it in any form.

## Note:

Due to product version upgrades or other reasons, this User Manual will be updated from time to time. Unless otherwise agreed, this document is provided as a guide for use only. All representations, information, and recommendations in this document do not constitute warranties of any kind, express, or implied.

**HOLLYVIEW**

Powered by Hollyland